

# ANDALUCIA PUD PLAT 5

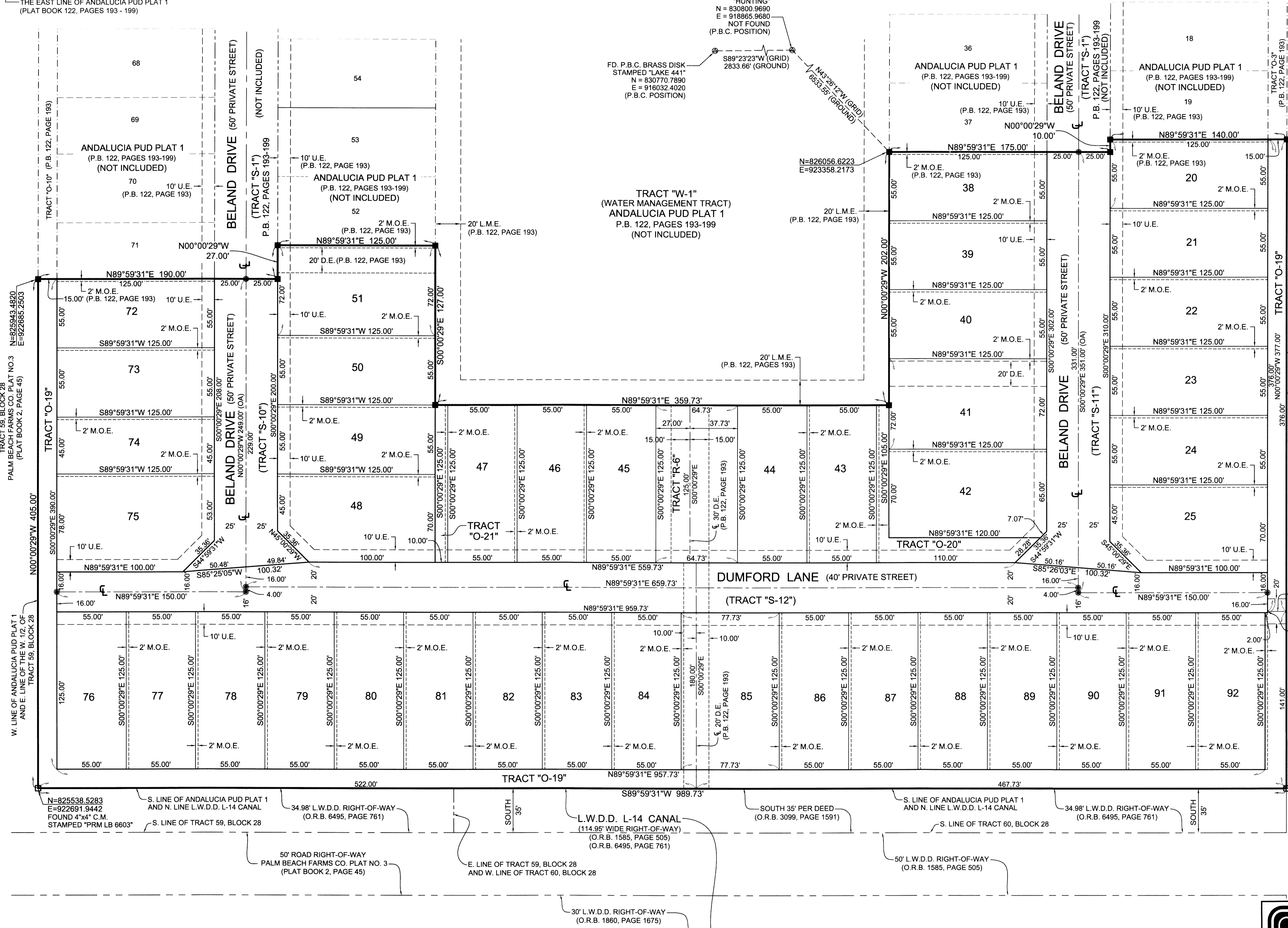
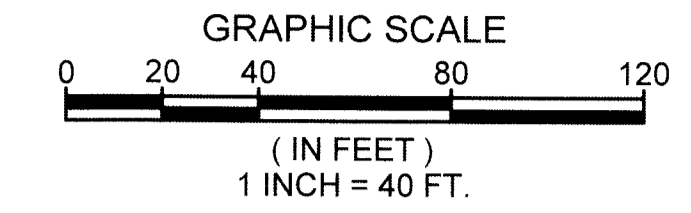
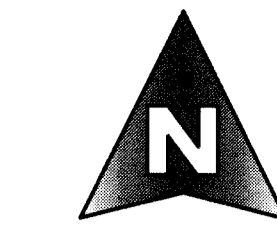
LYING IN SECTION 32, TOWNSHIP 44 SOUTH, RANGE 42 EAST, PALM BEACH COUNTY, FLORIDA,  
BEING A REPLAT OF TRACT "FD-1", ANDALUCIA PUD PLAT 1, AS RECORDED IN PLAT BOOK 122, PAGES  
193 THROUGH 199, INCLUSIVE, PUBLIC RECORDS OF PALM BEACH COUNTY, FLORIDA.

33

**COORDINATE NOTE:**  
STATE PLANE COORDINATES SHOWN ARE GRID DATUM, NAD 83 1990  
ADJUSTMENT, FLORIDA EAST ZONE, COORDINATE SYSTEM 1983 STATE  
PLANE, TRANSVERSE MERCATOR PROJECTION  
LINEAR UNIT = US SURVEY FEET  
ALL DISTANCES ARE GROUND  
SCALE FACTOR = 1.000022328  
GROUND DISTANCE X SCALE FACTOR = GRID DISTANCE

S 00°00'29"E (PLAT BEARING) -00°56'20" COUNTER-CLOCKWISE ROTATION  
S 00°56'49"E (GRID BEARING) PLAT TO GRID

THE EAST LINE OF ANDALUCIA PUD PLAT 1  
(PLAT BOOK 122, PAGES 193 - 199)



**LEGEND**

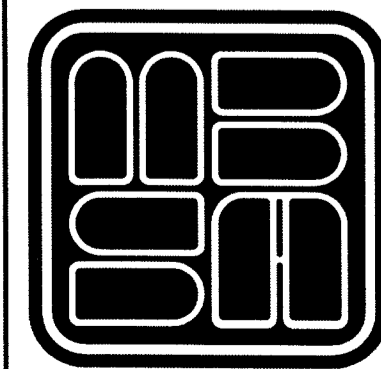
- P.O.C. = POINT OF COMMENCEMENT
- P.O.B. = POINT OF BEGINNING
- P.C.P. = PERMANENT CONTROL POINT
- P.R.M. = PERMANENT REFERENCE MONUMENT
- O.R.B. = OFFICIAL RECORD BOOK
- P.B. = PLAT BOOK
- PGS. = PAGES
- D.B. = DEED BOOK
- P.B.C. = PALM BEACH COUNTY
- R/W. = RIGHT OF WAY
- CL. = CENTERLINE
- U.E. = UTILITY EASEMENT
- D.E. = DRAINAGE EASEMENT
- R. = RADIUS
- Δ = ARC LENGTH
- ∠ = CURVE CENTRAL ANGLE
- ⊙ = DENOTES FOUND PALM BEACH COUNTY DISK IN CONCRETE
- ⊙ = SET NAIL AND ALUMINUM DISK, STAMPED "PCP LB 2438"
- = SET 4"x4"x24" C.M. WITH ALUMINUM DISK, STAMPED PRM LB 2438
- ⊠ = DENOTES FOUND 4"x4" C.M. WITH DISK AS SHOWN
- L.M.E. = LAKE MAINTENANCE EASEMENT
- C.L. = CHORD LENGTH
- C.B. = CHORD BEARING
- L.M.A.E. = LAKE MAINTENANCE ACCESS EASEMENT
- R.L. = RADIAL LINE
- TYP. = TYPICAL
- N. = NORTHING, WHEN USED WITH COORDINATES
- E. = EASTING, WHEN USED WITH COORDINATES
- M.O.E. = MAINTENANCE AND ROOF OVERHANG EASEMENT
- L.W.D.D. = LAKE WORTH DRAINAGE DISTRICT
- L.B.E. = LANDSCAPE BUFFER EASEMENT
- L.A.E. = LIMITED ACCESS EASEMENT
- L.S.E. = LIFT STATION EASEMENT
- P.A.E. = PEDESTRIAN ACCESS EASEMENT
- FOUND = FOUND
- OA. = OVERALL
- C.M. = CONCRETE MONUMENT
- F.P.L.E. = FLORIDA POWER AND LIGHT EASEMENT
- NO. = NUMBER
- P.B.C.U.E. = PALM BEACH COUNTY UTILITY EASEMENT
- P.S.M. = PROFESSIONAL LAND SURVEYOR
- P.D.E. = PUBLIC DRAINAGE EASEMENT
- LB. = PROFESSIONAL SURVEYOR AND MAPPER BUSINESS LICENSE NUMBER
- EB. = PROFESSIONAL ENGINEER BUSINESS LICENSE NUMBER

FD, P.B.C. BRASS DISK  
STAMPED "SUMMER"  
N = 830885.4090  
E = 924301.1320  
(P.B.C. POSITION)

FD, P.B.C. BRASS DISK  
STAMPED "PBF 35"  
N = 825752.6020  
E = 926621.3940  
(P.B.C. POSITION)

N=825554.8866  
E=923681.5611  
FOUND 4" x 4" x 24" C.M.  
WITH ALUMINUM DISK  
STAMPED "PRM LB 2438"

SHEET 2 OF 2



**MICHAEL B. SCHORAH & ASSOCIATES, INC.**  
1850 FOREST HILL BLVD., SUITE 206  
WEST PALM BEACH, FLORIDA 33406  
EB# 2438 TEL. (561) 968-0080 FAX. (561) 642-9726 LB# 2438

**ANDALUCIA PUD PLAT 5**